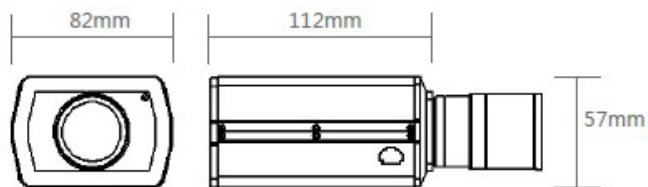


SDHB500BN

H.264



- 5 Megapixel - 2592x1920
- Programmable Mechanical IR Filter
- H.264/MJPEG/MPEG-4 Compression
- Dual Streaming
- Hybrid IP - Stream analogue & IP Simultaneously
- Internal events trigger HTTP Email / FTP
- Frame Rate & Bitrate Control
- PoE, 12VDC or 24VAC power
- 40 °F - 120 °F with no Heater/Blower
- DC auto iris support
- Low power consumption - 3.5 watts

Imaging	
Imaging Sensor	1/2.5 CMOS Sensor
Lens Mount	CS Mount (C mount with adapter)
Maximum Resolution	2592x1920 @ 10fps
BNC Video	Yes
Image Control	Auto Exposure, Auto Color Balance, Smart Sharpening
Contrast Control	Contrast Adjustment, Brightness adjustment, Digital Noise Reduction, Adaptive Imaging
Day/Night	Yes, True Day/Night Mechanical IR Filter
Lux Rating	0.3lux Color, 0.0lux with IR engaged
Flicker Control	Auto-detect
Motion Detection	Hardware motion detection, 16x16 zone
Data Transmission	
Compression	MJPEG / H.264 / MPEG-4
Multi-streaming	Supports dual streaming
Interface Standard	ONVIF 2.0
Transfer Protocols	FTP, HTTP, NTP, UDP, SMTP, DHCP
Connectivity	
Ethernet Connection	10/100-baseT, RJ45, PoE 802.3af
BNC Out	Output PAL and NTSC Video
Serial Connection	RS-232 Serial, DB9 Male, up to 115.2kb
Power	Auxiliary DC / Legacy AC / PoE
Alarm Input	1 x fully isolated alarm input
Relay	1 x fully isolated relay
Auto Iris	DC auto iris connector
Physical	
Dimensions	3.23"W (82mm) 2.25"H (57mm) 4.4"L (112mm)
Weight	14 Ounces (397 grams)
Operating Temperature	-30°F to 120°F (-34°C to 50°C) Without Heater / Blower
Power Requirements	12VDC / 24VAC / PoE
POE	Class 3
Power Consumption	3.5 Watts
EMI Approval	FCC Class A, CE (EN55024)

